











SPECIAL PROGRAMS

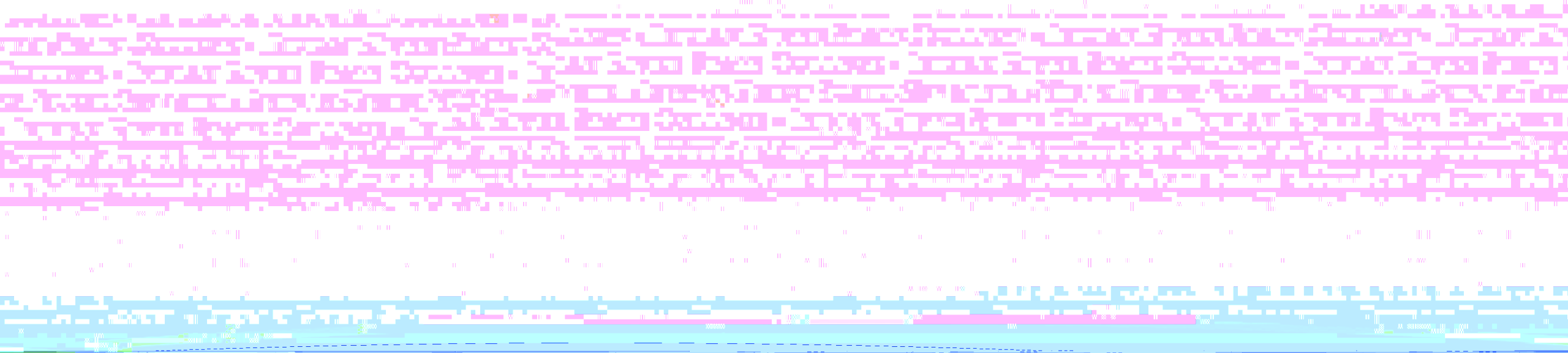
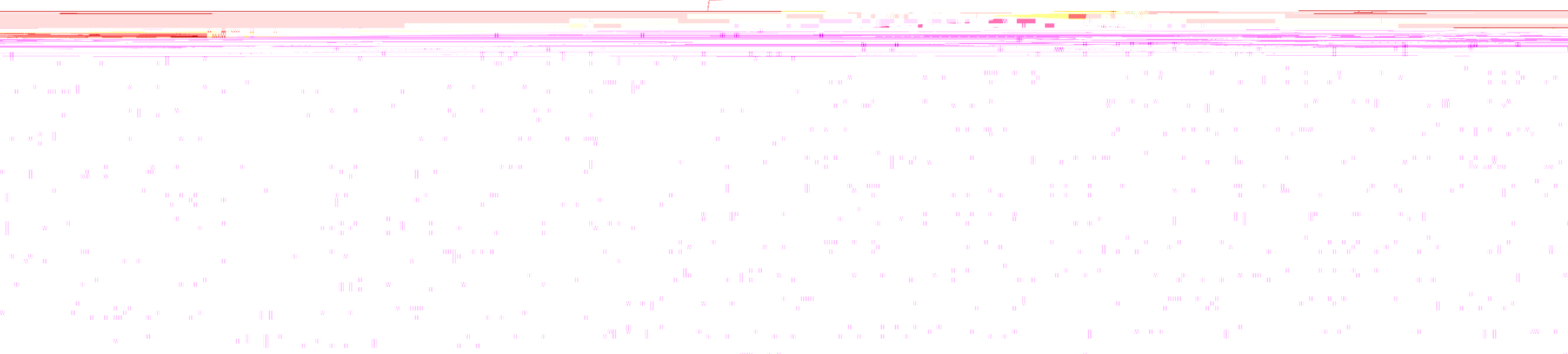
- " Public schools
- " GPA Requirement - 3.0 or 2.5 with demonstration of college readiness

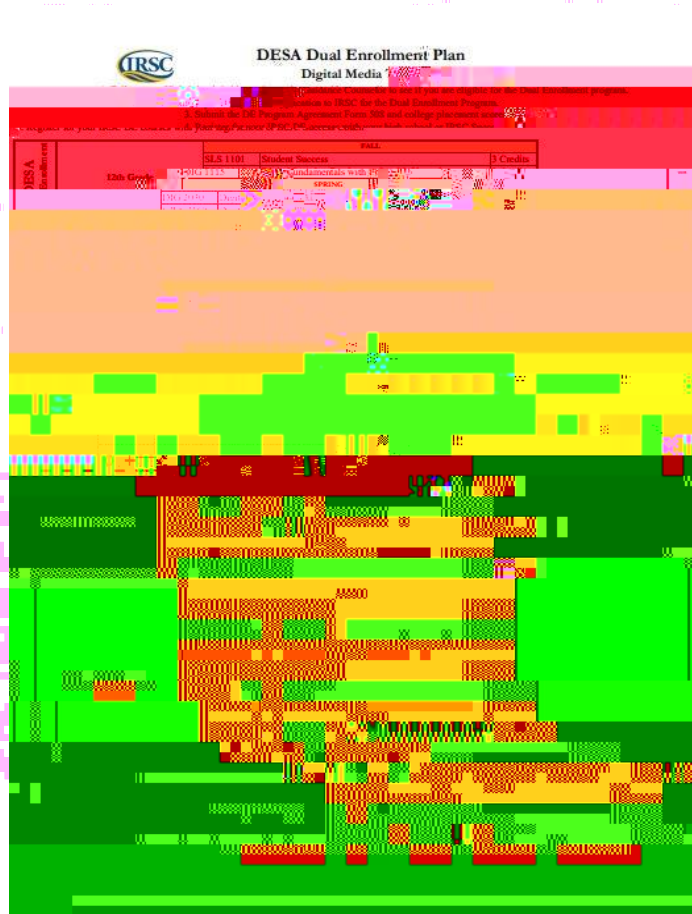
- " All schools are eligible
- " GPA Requirement - 3.0 with demonstration of college readiness

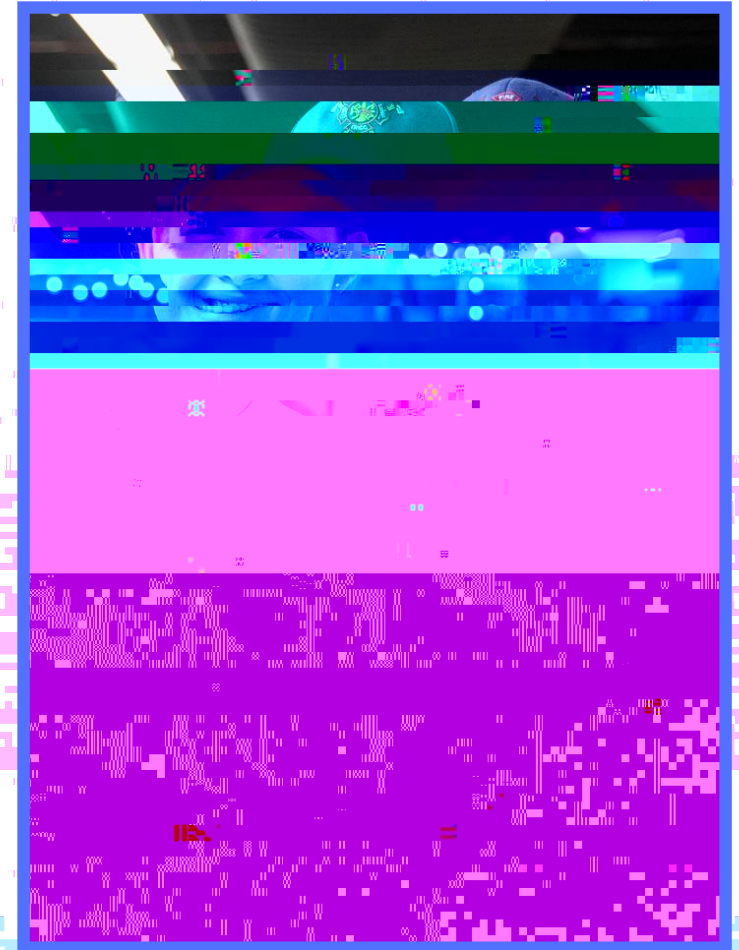
- " Public, charter, and private schools are eligible
- " GPA Requirement - 3.0 or 2.5 with demonstration of college readiness

Students pursuing an AS Degree

- " All schools are eligible
- " GPA Requirement - 2.5 unweighted GPA with demonstration of college readiness









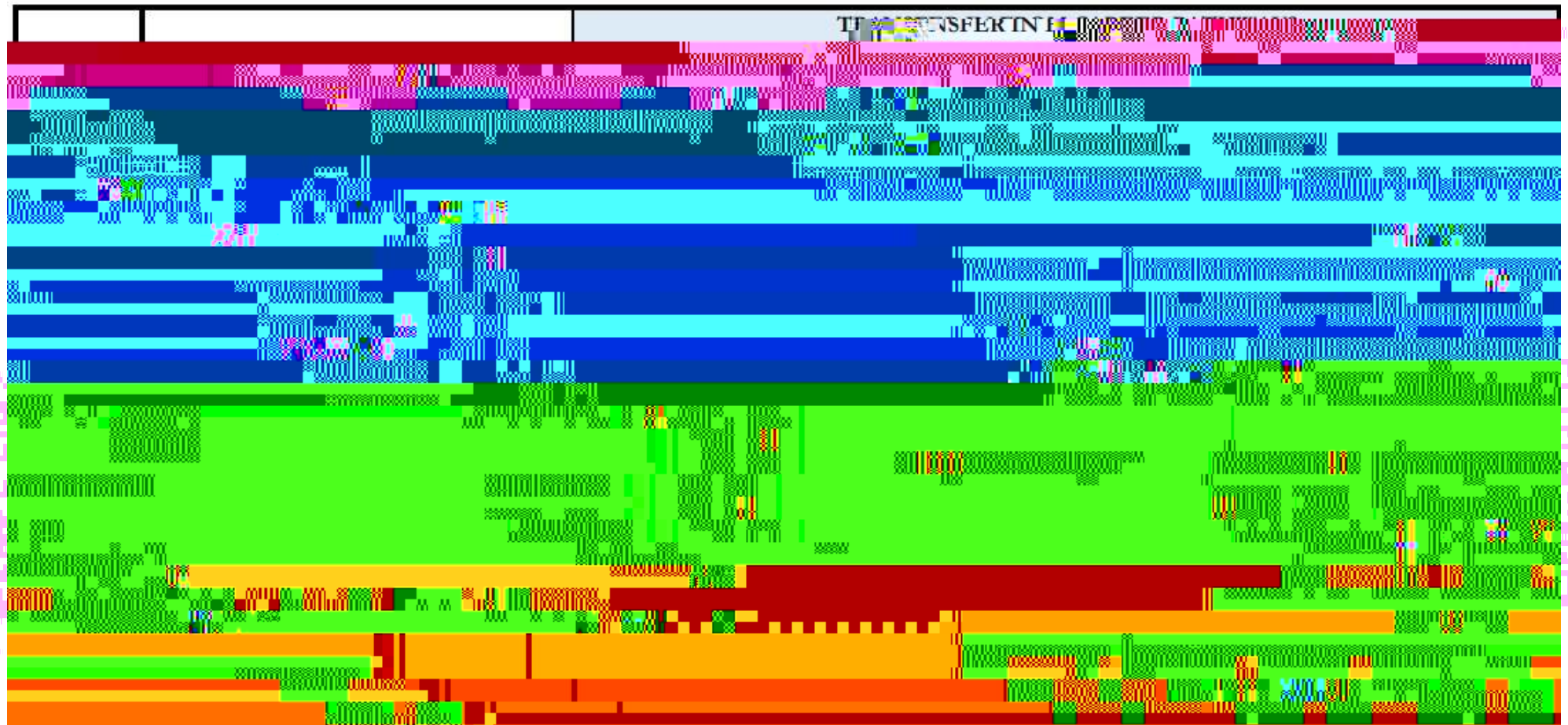


Student	LEC 10001	Intro to Literature	3 Credits
	BSC 1005	Life Science	3 Credits
	ACG 201	Financial Accounting I	3 Credits





Course ID	Course Title	Credits	Prerequisites	Term	Notes
MGT 1033	Intermediate Algebra	3 Credits	None	FALL	
MGT 1033	Intermediate Algebra	3 Credits	None	FALL	
MGT 1033	Intermediate Algebra	3 Credits	None	FALL	
MGT 1033	Intermediate Algebra	3 Credits	None	FALL	
MGT 1033	Intermediate Algebra	3 Credits	None	FALL	
MGT 1033	Intermediate Algebra	3 Credits	None	FALL	
MGT 1033	Intermediate Algebra	3 Credits	None	FALL	
MGT 1033	Intermediate Algebra	3 Credits	None	FALL	
MGT 1033	Intermediate Algebra	3 Credits	None	FALL	
MGT 1033	Intermediate Algebra	3 Credits	None	FALL	
MGT 1033	Intermediate Algebra	3 Credits	None	FALL	
MGT 1033	Intermediate Algebra	3 Credits	None	FALL	
MGT 1033	Intermediate Algebra	3 Credits	None	FALL	
MGT 1033	Intermediate Algebra	3 Credits	None	FALL	



Inyan Degan Stamp Collection

College Credit

Career Training

College Credit	Career Training
• Academic award = Associate Degree	• Academic award = Certificate
• Student type = Dual enrollment	• Student type = Dual enrollment
• Program of Study = Dual Enrollment	• Program of Study = Dual Enrollment
• Program focus = Selective track you	• Program focus = Training
• Program length = 2 years	• Program length = 1 year
• Program location = On campus	• Program location = On campus
• Program cost = Separate charges for each semester	• Program cost = Immediate
• Program type = Selective enrollment	• Program type = Immediate
• Program structure = Home schooling	• Program structure = Home schooling



Dual enrollment options:

- **Chemistry** - should take **BSC 101** (Principles of Chemistry I) or **BSC 102** (Principles of Chemistry II)
- **Physics** - should take **PHV 1020** (Principles of Physics I) or **BSC 200** (Principles of Physics II)
- **Math** - should take **liberal arts math course** (e.g., MATH 1010 or MATH 1020)

Other options:

- **AP Courses** - AP Chemistry, AP Physics C, AP Calculus BC
- **College Courses** - CHEM 101, CHEM 102, PHYS 101, PHYS 102, MATH 101, MATH 102

Additional Information:

- **Prerequisites** - Some courses may have prerequisites that must be completed before enrolling.
- **Grade Requirements** - Dual enrollment courses may have specific grade requirements for credit.
- **Financial Aid** - Dual enrollment courses may be eligible for financial aid.



